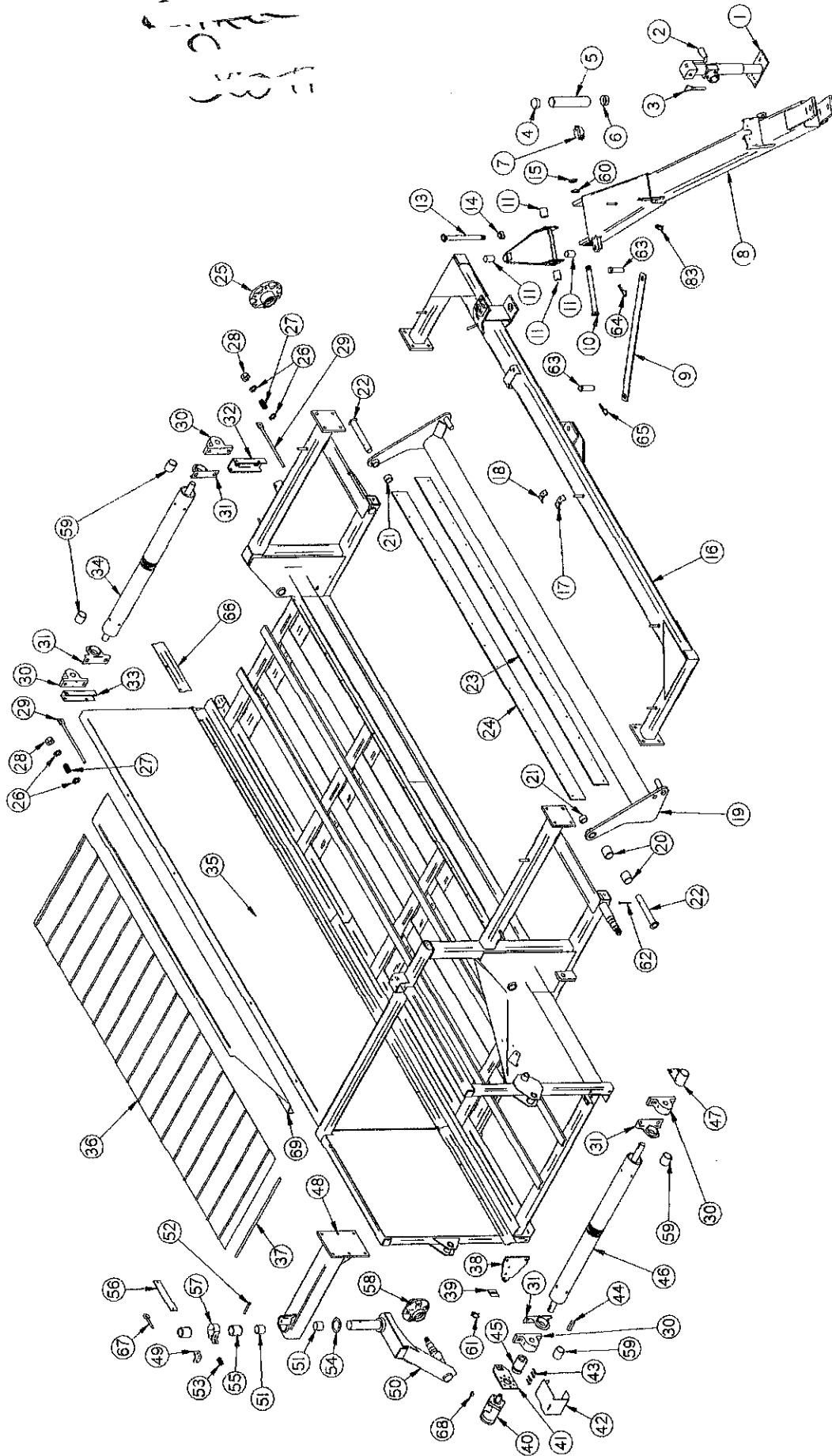




FIGURE 1



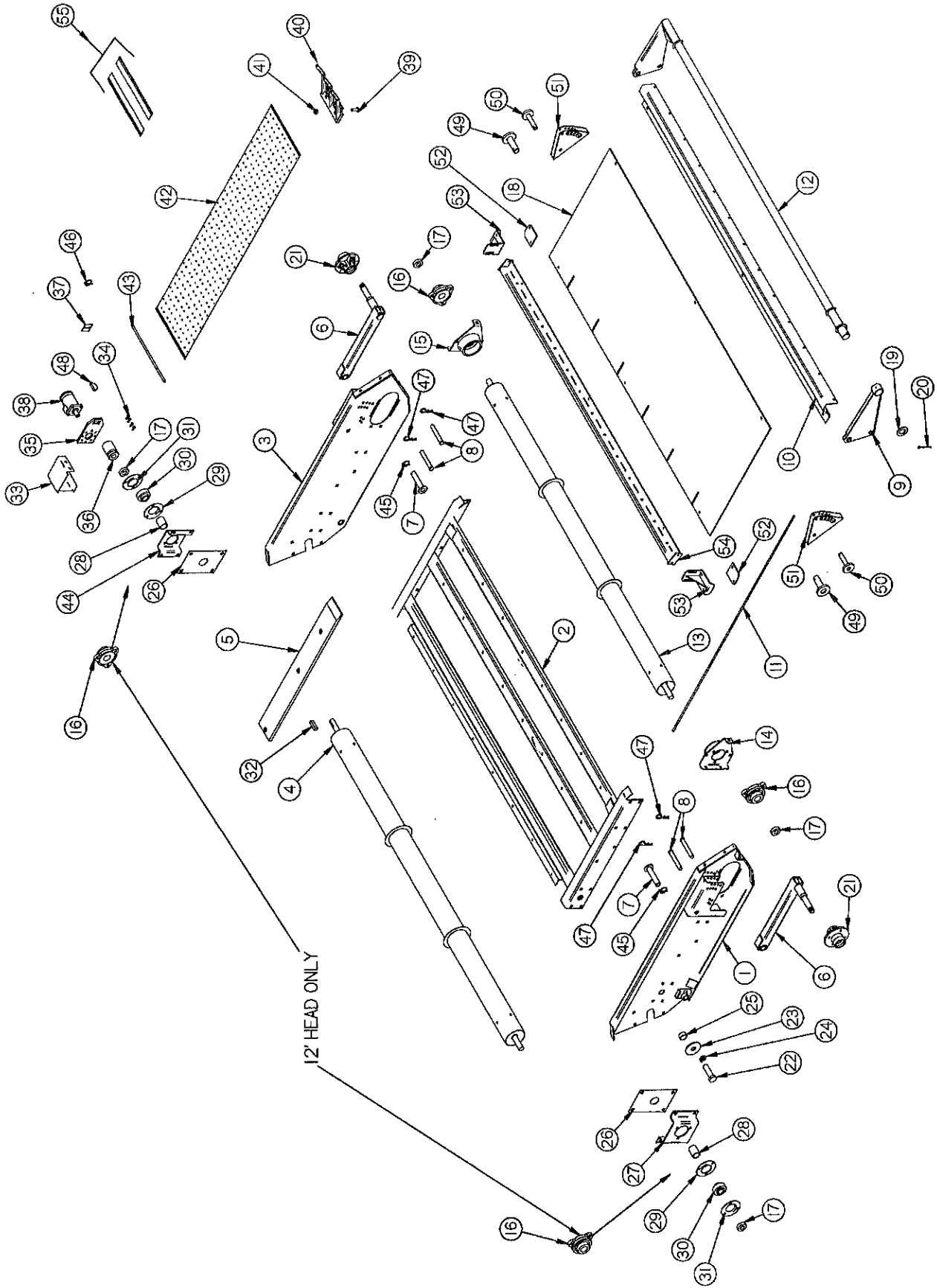
**FIGURE 1**  
**9' & 12' MERGER MAIN FRAME/POLE**

ITEM	PART NO.		DESCRIPTION	ITEM	PART NO.		DESCRIPTION
	9' HEAD	12' HEAD			9' HEAD	12' HEAD	
1.	BFR223	"	Jack	*	SWM38	"	Cross Conveyor Lacing
2.	B17B	"	Jack Handle	37.	SWM37	"	Lacing Pin
3.	BFR4	"	Jack Pin & Chain	38.	DWM51	"	Male Torque Arm
4.	S414	"	Cap	39.	DWM45	"	Motor Spacer
5.	S415	"	Tube	40.	DF1	"	Hydraulic Motor
6.	S418	"	Cap W/ Hole	*	WM225	"	Seal Kit
7.	S416	"	Hanger Bracket	41.	DWM39	"	Torque Arm
8.	WM227	"	Pole	42.	DWM42	"	Right Motor Shield
9.	WM129	"	Transport Lock	43.	DWM137	"	Cap Screw - Coupler
10.	RG22	"	Pole Pin	44.	G23	"	Key 5/16" x 1-3/8" Sq.
11.	RG11	"	Bushing 1"ID x 1-1/4"OD x 2"	45.	DWM27	"	Coupler
12.	WM228	"	Steering Pivot	46.	SWM11	"	Drive Roller
13.	WM231	"	Queen Pin	47.	DWM31	"	Shaft Shield
14.	RG17	"	Nut-Slotted 1"-14 Full Thread	48.	SWM3	"	Caster Mount
15.	RG14	"	Jam Nut 1"-14 Full Thread	49.	WM211	"	Break Angle
16.	WM226	WM305	Tongue Cross	50.	SWM2	"	Caster
17.	HE42	"	Hose Bracket	51.	BFR527	"	Bushing 2"ID x 2-1/4"OD x 2"
18.	23N67	"	Hose Bracket Front	52.	BFR313	"	Roll Pin 5/16" x 2-3/4"
19.	WM230	WM306	Pickup Lifter	53.	WM210	"	Spring - Red
20.	RG132	"	Bushing 1-1/4"ID x 2"	54.	RG24	"	Bronze Washer 2"ID x 3"OD x 1/8"
21.	SWM30	"	Spacer	55.	DWM59	"	Brake Bushing
22.	SWM13	"	Pin	56.	WM288	"	Brake Pad
23.	WM23	WM304	Skirt Belt	57.	WM286	"	Brake Band
24.	WM236	WM302	Skirt	58.	BFR60	"	Hub
25.	RG101	"	Hub - 6 bolt	*	BFR57	"	Seal
*	RG98	"	Seal	*	BFR58	"	Inner Bearing
*	RG99	"	Inner Bearing	*	BFR59	"	Inner Race
*	RG100	"	Inner Race	*	BFR143	"	Stud Bolt
*	RG102	"	Stud Bolt	*	BFR144	"	Stud Nut
*	BFR144	"	Stud Nut	*	BFR61	"	Outer Race
*	RG47	"	Outer Race	*	BFR62	"	Outer Bearing
*	RG48	"	Outer Bearing	*	BFR63	"	Washer
*	RG182	"	Washer	*	BFR64	"	Nut
*	RG105	"	Hub Nut	*	BFR66	"	Hub Cap
*	RG103	"	Hub Cap	*	BFR65	"	Cotter Pin
*	T56	"	5/32" x 2" Cotter Pin	*	BFR128	"	Tire 6.70 x 15 SL
*	RG128	"	Tire 9.5 L x 15	*	BFR67	"	Wheel 15 x 5
*	12N24	"	Wheel 15 x 8	59.	SWM30	"	Spacer
26.	K68D	"	Washer 1/2"	60.	RG13	"	1" Star Washer
27.	DWM125	"	Spring - Blue	61.	F56	"	Lynch Pin
28.	R29	"	Nut 1/2"	62.	WM269	"	Bolt 1/4" x 3" GR.5
29.	DWM25	"	Tightener	63.	WM270	"	Clevis Pin
30.	DWM132	"	Pillow Block Bearing	64.	R70	"	Cotter Pin
31.	DWM36	"	Anti-Wrap Guard	65.	BFR7	"	Hair Pin
32.	SWM34	"	Tightener Arm	66.	SWM59	"	Left Rear Guard Extension
33.	SWM33	"	Back Tightener Arm	67.	WM287	"	I-Bolt
34.	SWM10	"	Conveyor Roller	68.	5B10	"	Key 1/4" x 1" Woodruff
35.	WM229	WM308	Main Frame	69.	WM300	"	Hay Deflector
36.	WM237	WM301	Cross Conveyor Belt				

**NOTE:** \*Means Not Shown

" Means Same As Previous

FIGURE 2

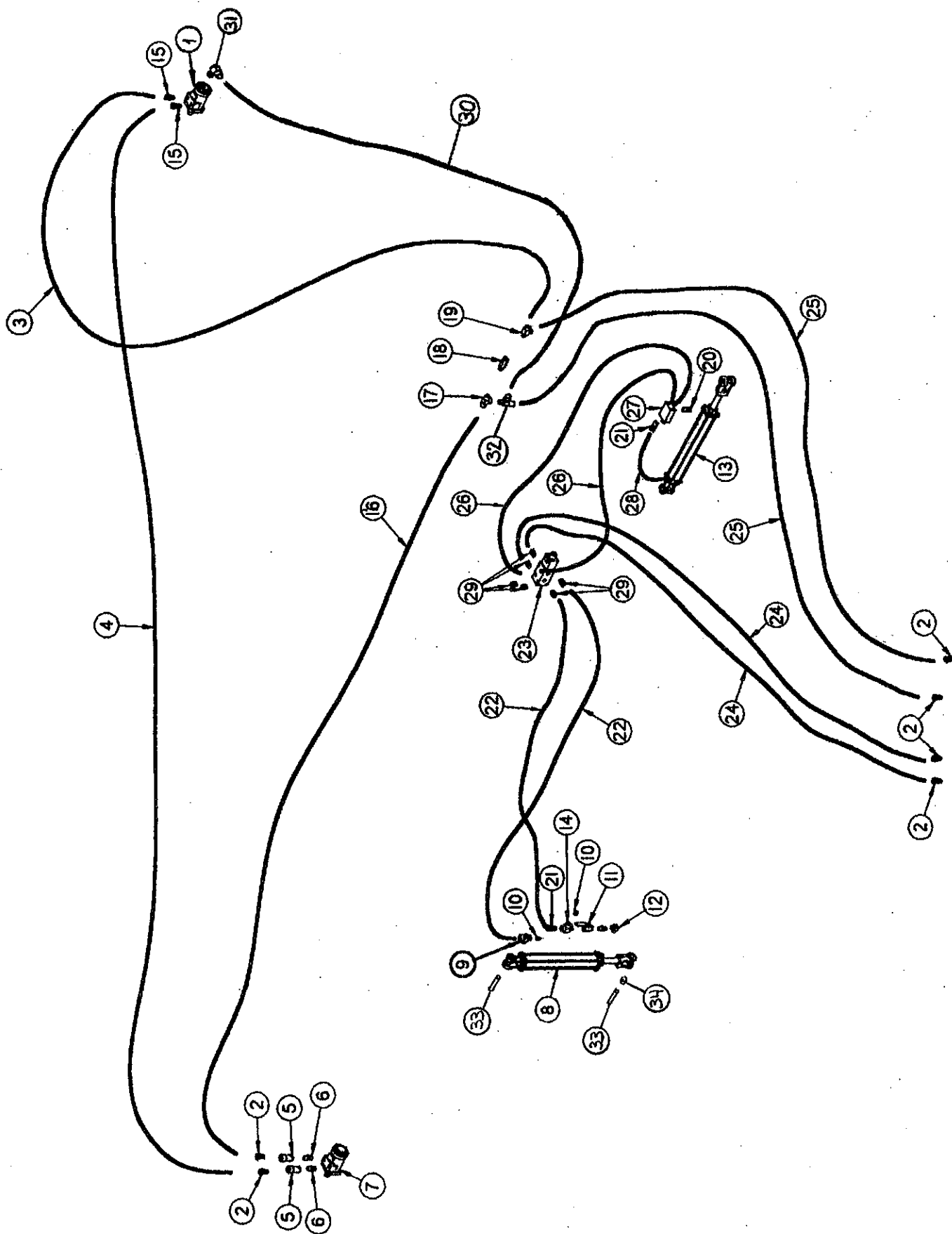


**FIGURE 2  
9' & 12' MERGER PICK-UP HEAD**

ITEM	PART NO.		DESCRIPTION	ITEM	PART NO.		DESCRIPTION
	9' HEAD	12' HEAD			9' HEAD	12' HEAD	
1.	DWM6	"	Right Head Panel	25.	WM183	"	Pivot Bushing
2.	WM234	WM307	Flat Belt Frame	26.	WM180	"	Side Panel Slot Plate
3.	DWM5	"	Left Head Panel	27.	WM187	SHM13	Bearing Bracket RH
4.	WM232	SHM5	Head Drive Roller	28.	SWM54	"	Spacer
5.	SWM15	"	Slides (8)	29.	F145	"	Flange
6.	DWM8	"	Gauge Arms	30.	WM29	"	Bearing
7.	DWM7	"	Pivot Pin	31.	F143	"	Flange (Greaseable)
8.	DWM127	"	Clevis Pin	32.	G23	"	Sq. Key 5/16" x 1-3/8"
9.	DWM332	"	Right Wind Guard	33.	DWM40	"	Head Shield
10.	DWM2	SHM9	Wind Guard Holder	34.	DWM137	"	Cap Screw-Coupler
11.	WM299	"	Wind Guard Rods (13)	35.	DWM39	"	Hydraulic Motor Mount
12.	DWM333	SHM3	Wind Guard	36.	DWM27	"	Coupler
13.	WM233	SHM6	Front Idler Roller	37.	DWM45	"	Motor Spacer
14.	WM179	"	Right Front Roller Bracket	38.	DWM84	"	Hydraulic Motor
15.	WM192	"	Left Front Roller Bracket	*	WM225	"	Seal Kit
16.	SWM35	"	3-Bolt Bearing Assembly	39.	SWM26	"	1/4" x 3/4" Elevator Bolts (780)
17.	WM27	"	Lock Collar	40.	SWM1	"	Pickup Teeth (390)
18.	WM297	WM303	Poly Wind Guard	41.	SWM27	"	1/4 Keps Lock Nuts (780)
19.	DWM227	"	Wind Guard Washer	42.	SWM56	"	Pickup Belts - Only
20.	SWM55	"	Cotter Pin 1/4" x 2-1/2"	*	SWM57	"	Complete Belt W/ Teeth
21.	CAT177	"	Hub - Complete	43.	SWM41	"	Lacing Pin
*	CAT135A	"	Seal	44.	DW186	SHM12	Bearing Bracket LH
*	CAT10	"	Bearing (2)	45.	R70	"	3/16" x 2" Cotter Pin
*	CAT9	"	Race (2)	46.	F56	"	Lynch Pin
*	CAT128	"	Stud	47.	ES7	"	Hair Pin
*	BFR144	"	Lug Nut	48.	5B10	"	Key 1/4" x 1" Woodruff
*	CAT12	"	Spindle Nut	49.	DWM347	"	Wind Guard Pivot Pin
*	BFR65	"	Cotter Pin	50.	DWM348	"	Wind Guard Adj. Pins
*	CAT13	"	Hub Cap	51.	DWM374	"	Wind Guard Bracket
*	SWM17	"	Wheel (2)	52.	DWM368	"	Wind Guard Poly
*	SWM18	"	Tire 5.70-8 (2)	53.	DWM385	"	Poly Brackets
22.	DWM177	"	Bolt 1" x 2-1/2" GR.5 Full Thread	54.	DWM355	SHM2	Poly Support
23.	WM218	"	Washer	55.	SWM61	"	Repair Dutchman Kit
24.	DWM171	"	1" Lock Washer				

**NOTE:** \*Means Not Shown  
" Means Same As Previous

FIGURE 3

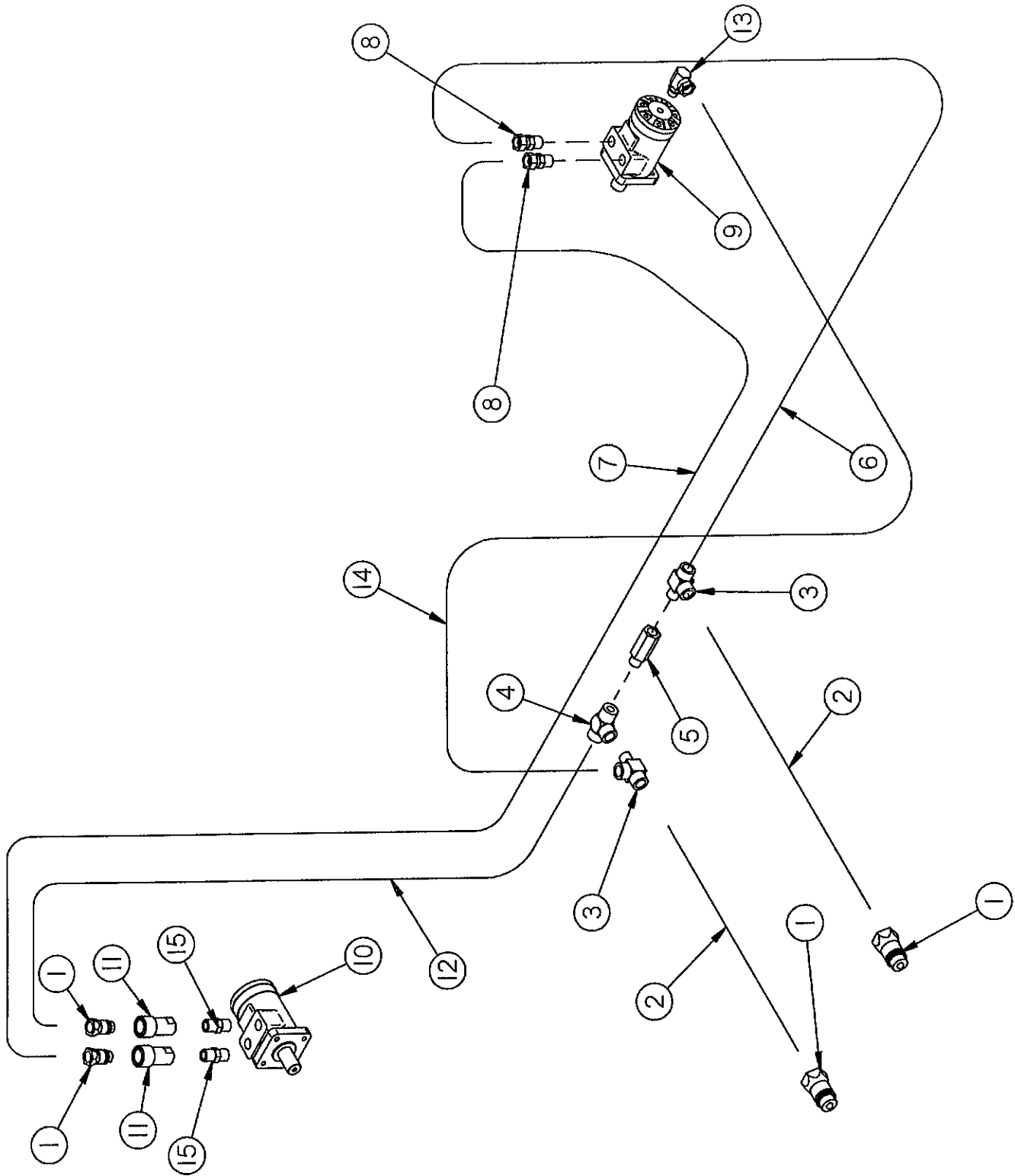


**FIGURE 3  
9' MERGER HYDRAULICS**

<b>ITEM</b>	<b>PART NO.</b>	<b>DESCRIPTION</b>
1.	DWM84	Hydraulic Motor
*	WM225	Seal Kit
2.	DWM205	Male Coupler
3.	WM255	Hose 1/2" x 84"
4.	WM310	Hose 1/2" x 358"
5.	DWM206	Female Coupler
6.	WM141	1/2" Nipple Nut
7.	DF1	Hydraulic Motor
*	WM225	Seal Kit
8.	BFR69A	2" x 8" Cylinder
9.	WM146	1/2" Male/Female Tee
10.	WM147	Pipe Plug 3/8"
11.	16SV338	3/8" Ball Valve
12.	23N234	3/8" Street Elbow
13.	12V116A	2" x 16" Cylinder
14.	23N116	3/8" Service Tee
15.	LW174	1/2" Union Adapter
16.	WM311	Hose 1/2" x 266"
17.	DF8	1/2" Tee
18.	DF18	1/2" Check Valve
19.	16SV352	1/2" Service Tee
20.	BFR188	3/8" Nipple Nut
21.	T244	Adapter Union W/.042" Orifice
*	BFR122	Adapter Union
*	DWM250	Orifice .042
22.	WM257	Hose 1/4" x 140"
23.	16SV247	Waterman Valve
24.	WM258	Hose 1/4" x 164"
25.	WM259	Hose 1/2" x 164"
26.	WM260	Hose 1/4" x 24"
27.	WM176	Pole Lock Valve
28.	BFR315	Hose 1/4" x 20"
29.	WM148	Female Adapters
30.	WM271	Hose 1/4" x 102"
31.	DWM119	O-Ring Adapter
32.	LW96	Tee
33.	BFR517	Cylinder Pin
34.	K132	Cylinder Spacer

**NOTE:** \* Means Not Shown

FIGURE 4



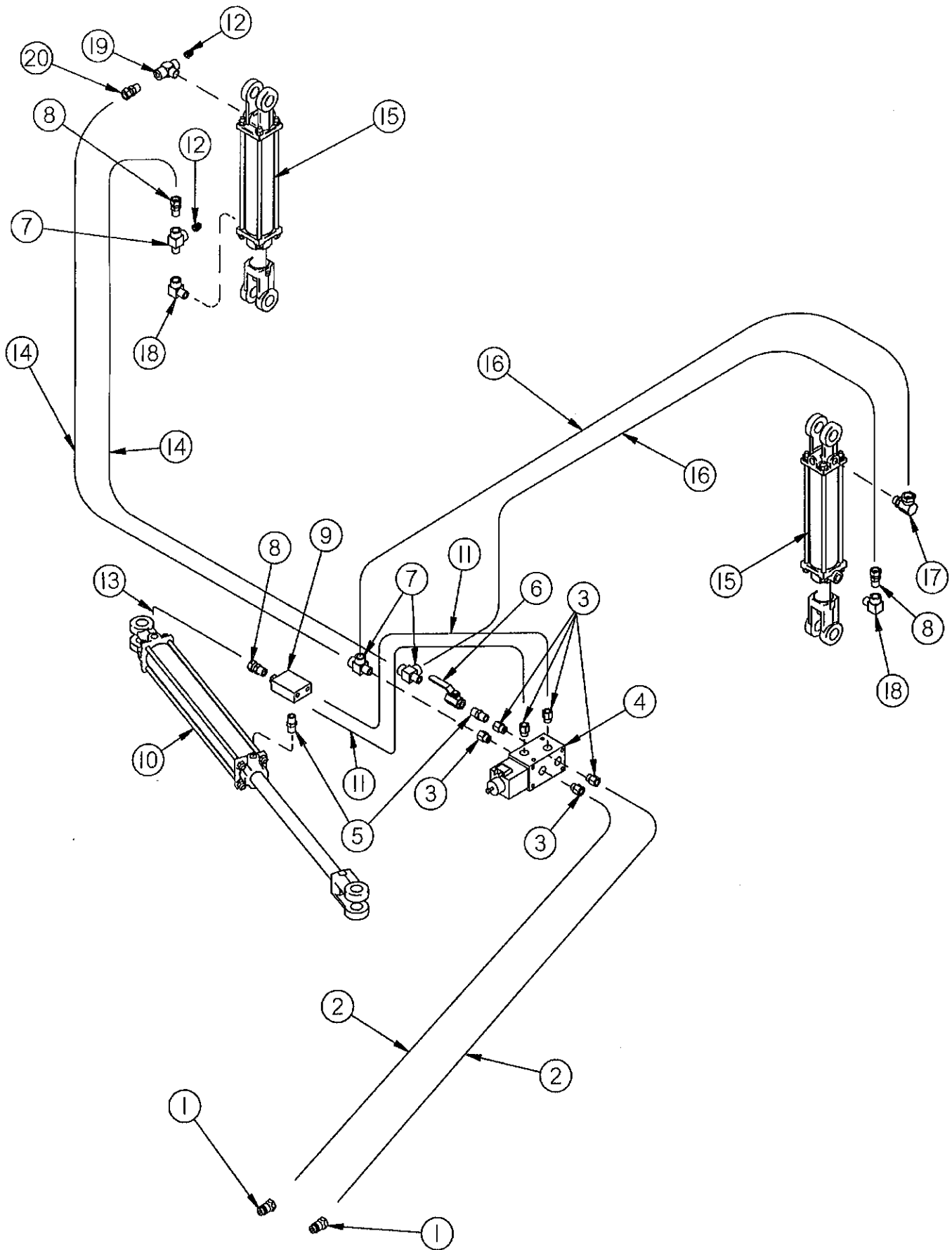


**FIGURE 4  
12' HEAD MERGER MOTOR CIRCUIT**

<b>ITEM</b>	<b>PART NO.</b>	<b>DESCRIPTION</b>
1.	DWM205	Male Coupler
2.	WM259	Hose 1/2" x 164"
3.	16SV352	1/2" Service Tee
4.	DF8	1/2" Tee
5.	DF18	1/2" Check Valve
6.	WM255	Hose 1/2" x 84"
7.	WM312	Hose 1/2" x 394"
8.	LW174	1/2" Union Adapter
9.	DWM84	Hydraulic Motor - <i>PICK UP</i>
*	WM225	Seal Kit
10.	DF1	Hydraulic Motor - <i>CROSS CONV</i>
11.	DWM206	Female Coupler
12.	WM313	Hose 1/2" x 302"
13.	DWM119	O-Ring Adapter
14.	WM271	Hose 1/4" x 102"
15.	WM141	1/2" Nipple Nut

**NOTE:** \* Means Not Shown

FIGURE 5

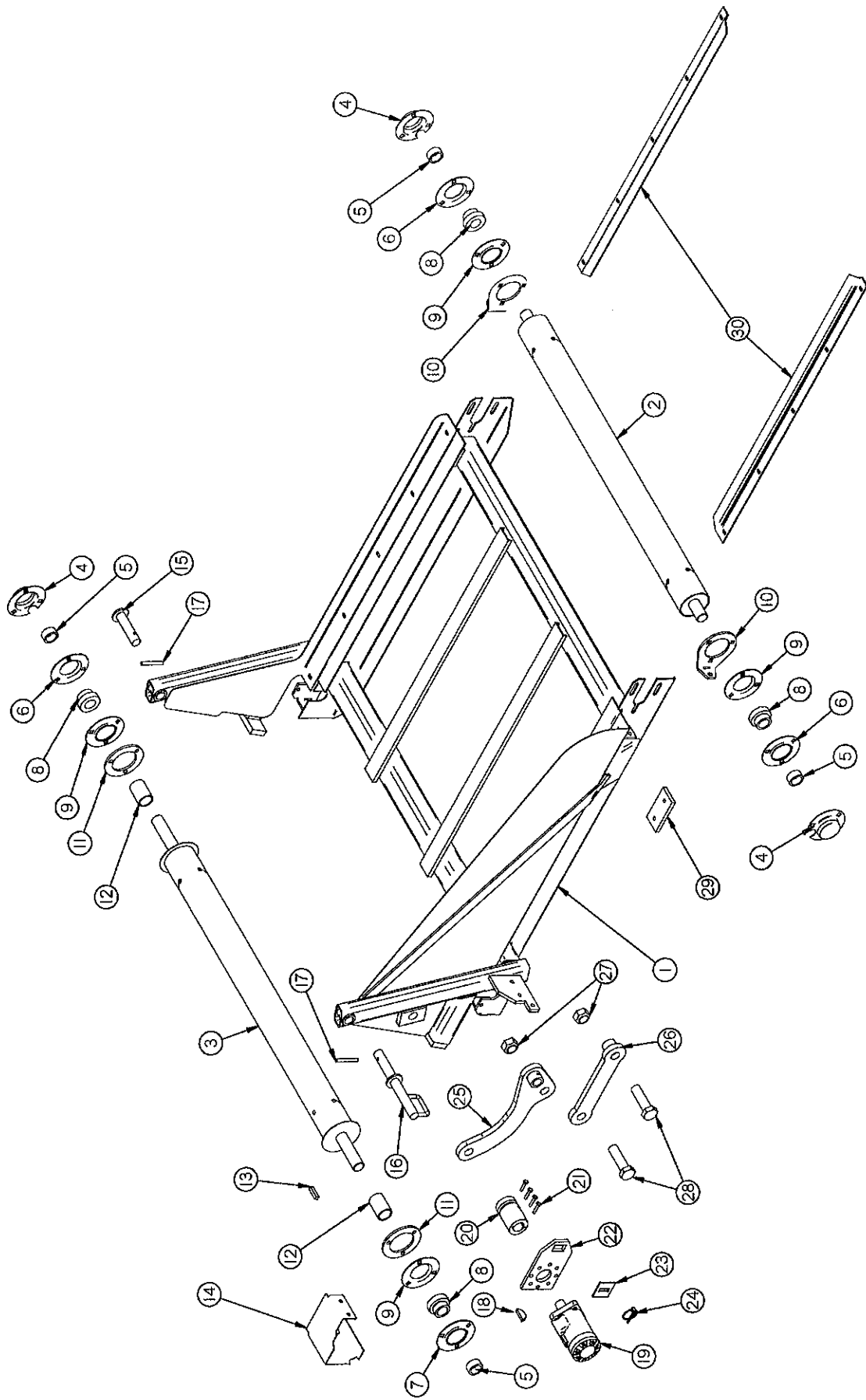


**FIGURE 5**  
**12' MERGER - HEAD LIFT HYDRAULICS**

<b>ITEM</b>	<b>PART NO.</b>	<b>DESCRIPTION</b>
1.	DWM205	Male Coupler
2.	WM258	Hose 1/4" x 164"
3.	WM148	Female Adapters
4.	16SV247	Waterman Valve
5.	BFR188	3/8" Nipple Nut
6.	16SV338	3/8" Ball Valve
7.	23N116	3/8" Service Tee
8.	T244	Adapter Union W/ .042" Orifice
*	BFR122	Adapter Union (Threaded)
*	DWM250	Orifice .042
9.	WM176	Pole Lock Valve
10.	12V116A	2" x 16" Cylinder
11.	WM260	Hose 1/4" x 24"
12.	WM147	Pipe Plug 3/8"
13.	BFR315	Hose 1/4" x 20"
14.	WM315	1/4 x 175" - 3/8 MP & 3/8 MP
15.	BFR69A	2" x 8" Cylinder
16.	WM314	1/4 x 108" - 3/8 MP & 3/8 MP
17.	DWM110	3/8" Street Elbow W/90 Degree Swivel
18.	23N234	3/8" Street Elbow
19.	WM146	3/8" Male/Female Tee
20.	DWM233	3/8" Adapter Union (Un-Threaded)

**NOTE:** \* Means Not Shown

FIGURE 6



**FIGURE 6**  
**9' & 12' MERGER - EXTENSIONS**

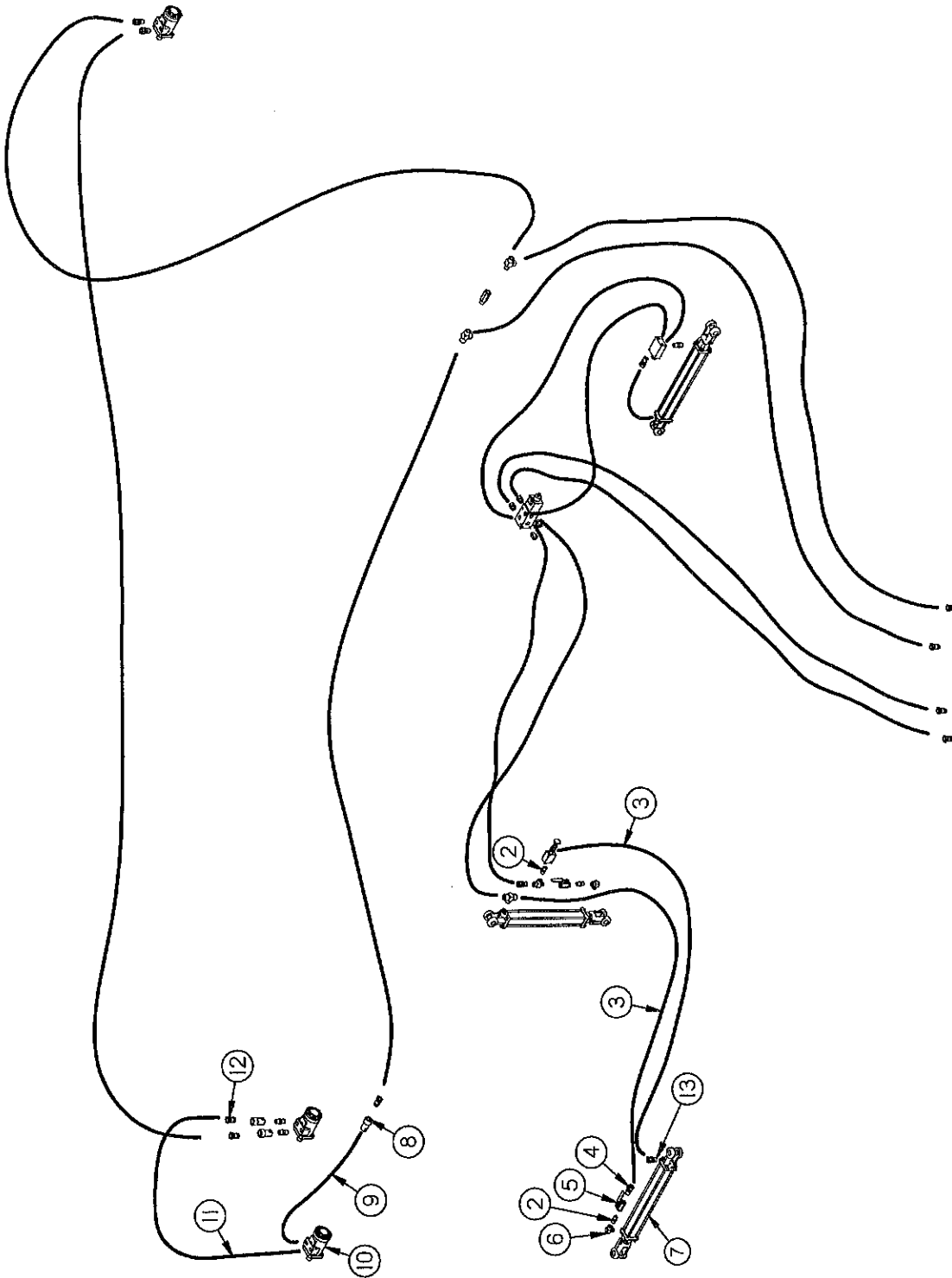
ITEM	PART NO.			DESCRIPTION
	2' EXT.	4' EXT.	6' EXT.	
1.	WM242	WM320	WM321	Frame
2.	WM244	"	"	Tightener Roller
3.	WM243	"	"	Drive Roller
4.	F95	"	"	Bearing Shield
5.	F16	"	"	Lock Collar
6.	F114	"	"	Flange W/Straight Zerk
7.	F114A	"	"	Flange W/45 Degree Zerk
8.	F115	"	"	Bearing
9.	F14	"	"	Flange
10.	WM250	"	"	Flange Tightener
11.	23N174	"	"	Flange Spacer
12.	WM136	"	"	Ext. PVC Shield
13.	WM121	"	"	Sq. Key 5/16" x 1"
14.	WM319	"	"	Motor Shield
15.	WM245	"	"	Extension Pivot Pin
16.	WM248	"	"	Extension Pivot Pin Front
17.	3G22	"	"	Expansion Pin 5/16" x 1-3/4"
18.	5B10	"	"	Woodruff Key 1/4" x 1"
19.	DF1	"	"	Hydraulic Motor
*	WM225	"	"	Seal Kit
20.	DWM27	"	"	Coupler
21.	DWM137	"	"	Socket Head Cap Screw
22.	DWM39	"	"	Torque Arm
23.	DWM45	"	"	Motor Spacer
24.	F56	"	"	Lynch Pin
25.	WM317	"	"	Long Link
26.	WM318	"	"	Short Link
27.	BFR178	"	"	1" Lock Nut
28.	BFR545	"	"	Bolt 1" x 3-1/2" GR.5
29.	-----	WM251	"	Rubber Bumper
30.	WM272	WM273	WM274	Belt Guard
*	WM252	WM253	WM254	Belt
*	SWM37	"	"	Lacing Pin
*	SWM38	"	"	Lacing-Cross Conveyor

**NOTE:** \* Means Not Shown

----- Means Not Used On This Model

" Means Same As Previous

FIGURE 7



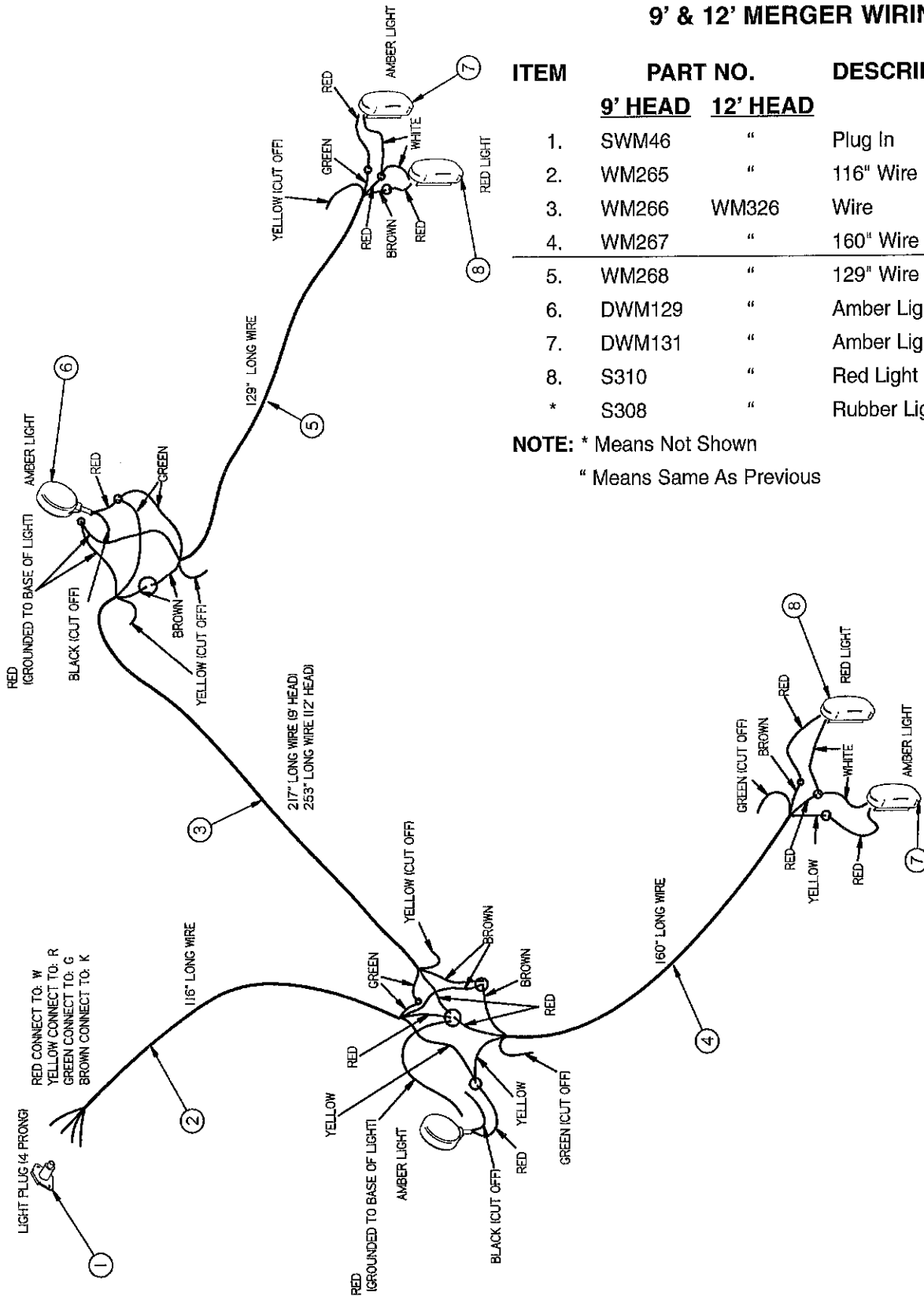
**FIGURE 7**  
**9' & 12' MERGER**  
**2-4-6 FOOT EXTENSION HYDRAULICS**

<b>ITEM</b>	<b>PART NO.</b>	<b>DESCRIPTION</b>
1.	16SV339	Sequence Valve
2.	BFR188	3/8" Nipple Nut
3.	WM257	Hose 1/4" x 140"
4.	T244	3/8" Union Adapter W/.042" Orifice
5.	16SV338	3/8" Ball Valve
6.	23N234	3/8" Street Tee
7.	23N111A	Extension Cylinder
8.	DWM206	Female Coupler
9.	WM263	Hose 1/2" x 24"
10.	DF1	Hydraulic Motor
*	WM225	Seal Kit
11.	WM264	Hose 1/2" x 40"
12.	DWM205	Male Coupler
13.	DWM233	3/8" Adapter Union

**NOTE:** Parts that are not numbered are used on standard hydraulics (See Figure 4)

\* Means Not Shown

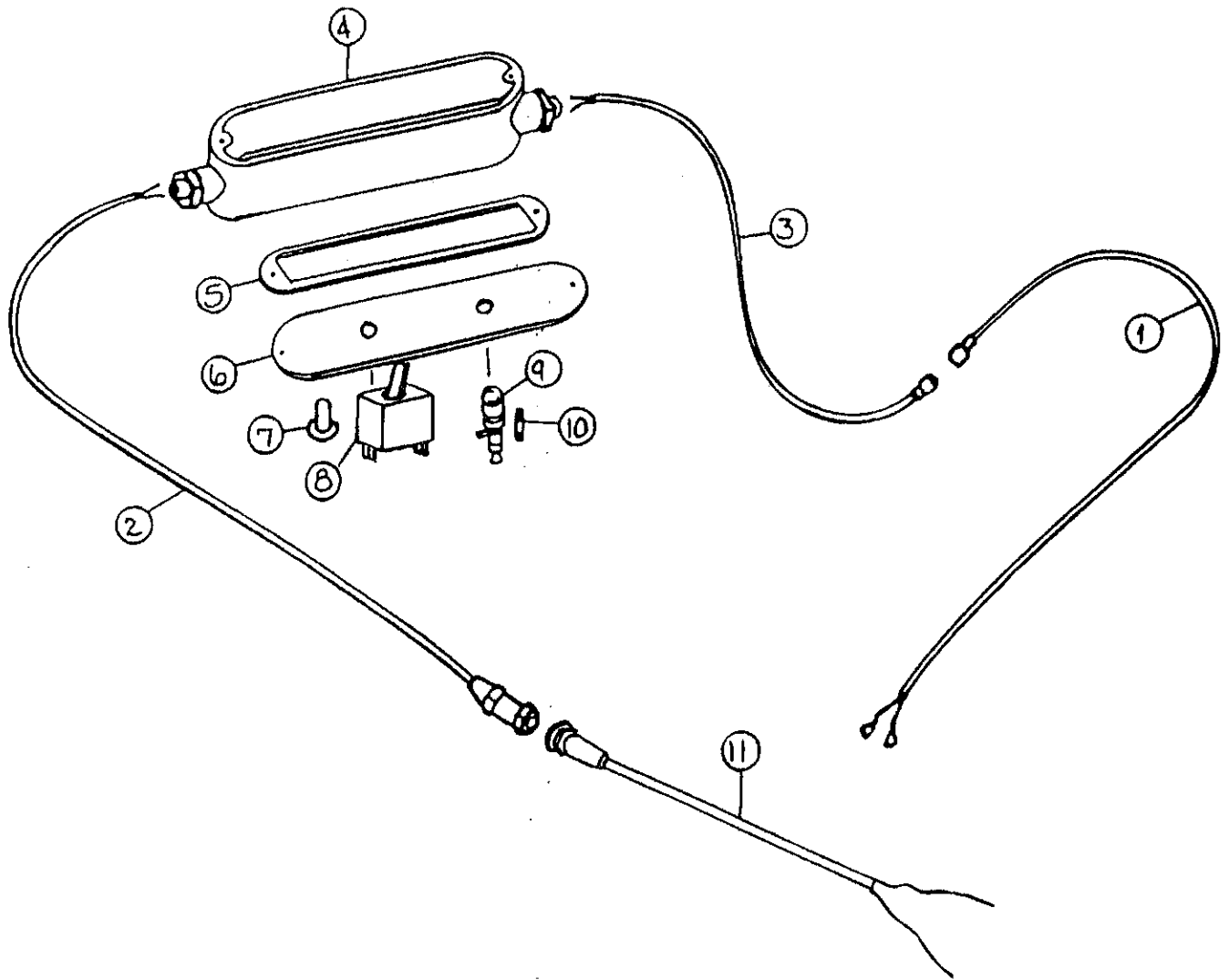
**FIGURE 8**  
**9' & 12' MERGER WIRING**



ITEM	PART NO.		DESCRIPTION
	9' HEAD	12' HEAD	
1.	SWM46	"	Plug In
2.	WM265	"	116" Wire
3.	WM266	WM326	Wire
4.	WM267	"	160" Wire
5.	WM268	"	129" Wire
6.	DWM129	"	Amber Light (Yellow Hazard)
7.	DWM131	"	Amber Light
8.	S310	"	Red Light
*	S308	"	Rubber Light Mount

**NOTE:** \* Means Not Shown  
" Means Same As Previous

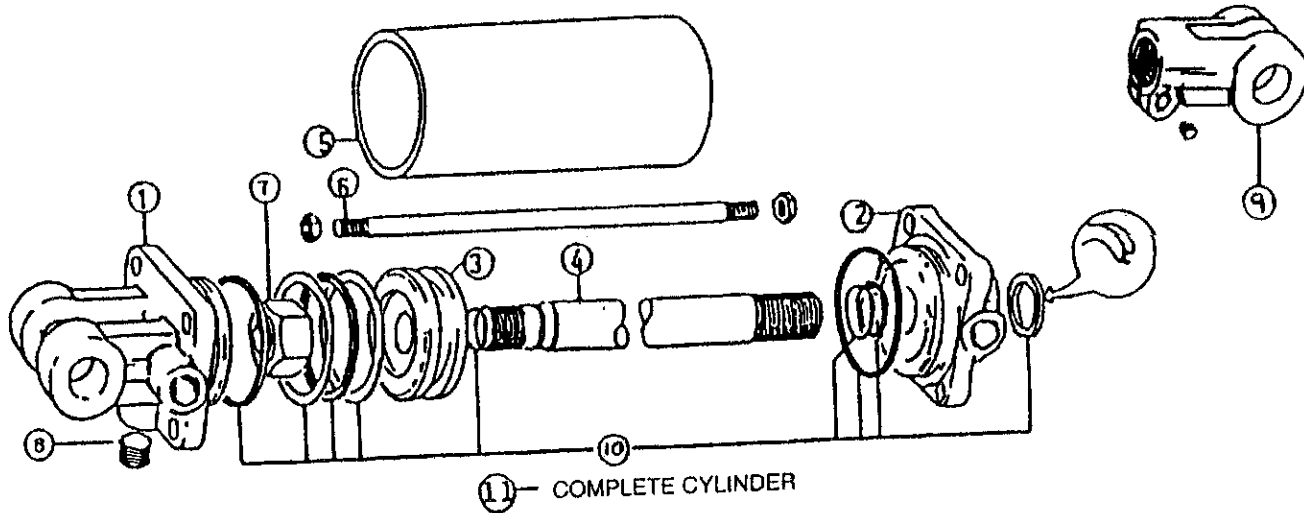




**FIGURE 9  
9' & 12' MERGER  
ELECTRIC CONTROL BOX**

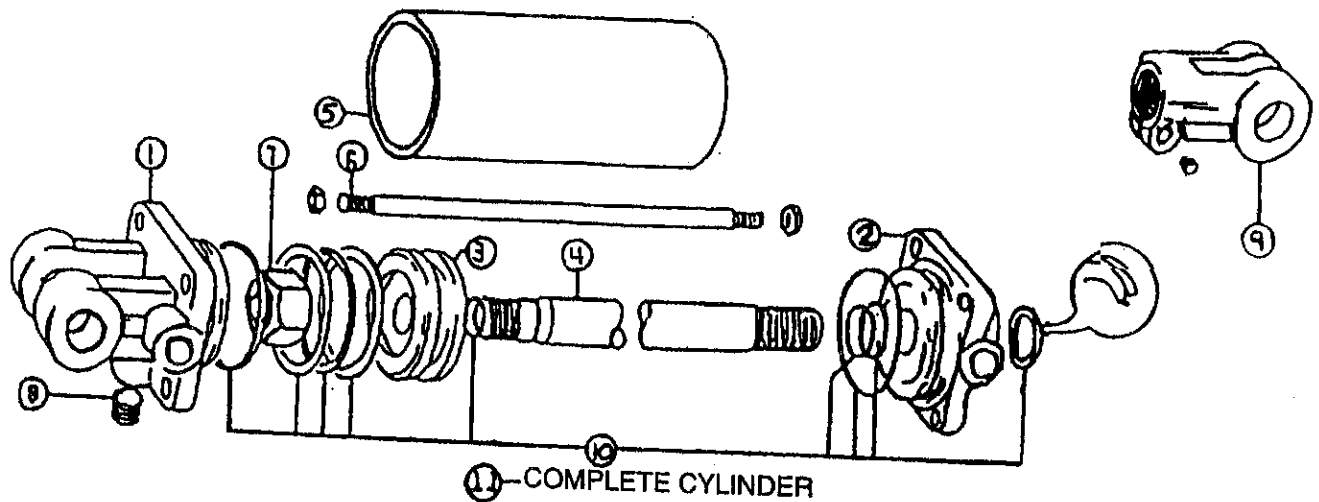
ITEM	PART NO.	DESCRIPTION
1.	WM108	Merger Power Supply Cord W/Ends
2.	16SV271	Control Box Power Supply W/Plug in Slots
3.	16SV270	Tractor Power Supply W/Pins
4.	16SV316	Control Box
5.	16SV317	Control Box Gasket
6.	16SV318	Control Box Cover
7.	16SV235	Switch Boot
8.	WM109	Pole / Pickup Switch
9.	16SV231	Fuse Folder
10.	16SV232	Fuse
11.	16SV269	Tractor Control Cord
*	WM110	Control Box Complete

**NOTE:** \* Means Not Shown



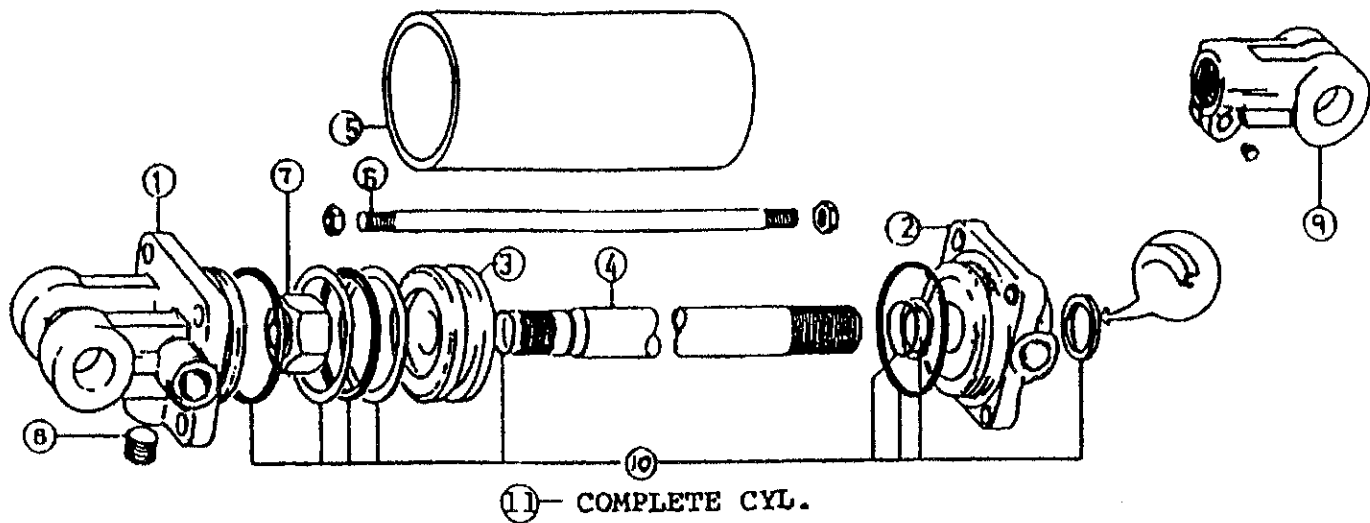
**FIGURE 10**  
**9' & 12' MERGER**  
**PICKUP - HYDRAULIC CYLINDER 8"**

ITEM	PART NO.	DESCRIPTION
1.	23N142A	Clevis
2.	23N143A	Rod Cap
3.	23N144	Piston
4.	T134A	Rod
5.	BFR68	Cylinder Tube
6.	T186	Tie Rod
7.	23N148	Piston Nut
8.	23N149	Plug
9.	23N150A	Rod Clevis
10.	23N151	Seal Kit
11.	BFR69A	Complete Cylinder



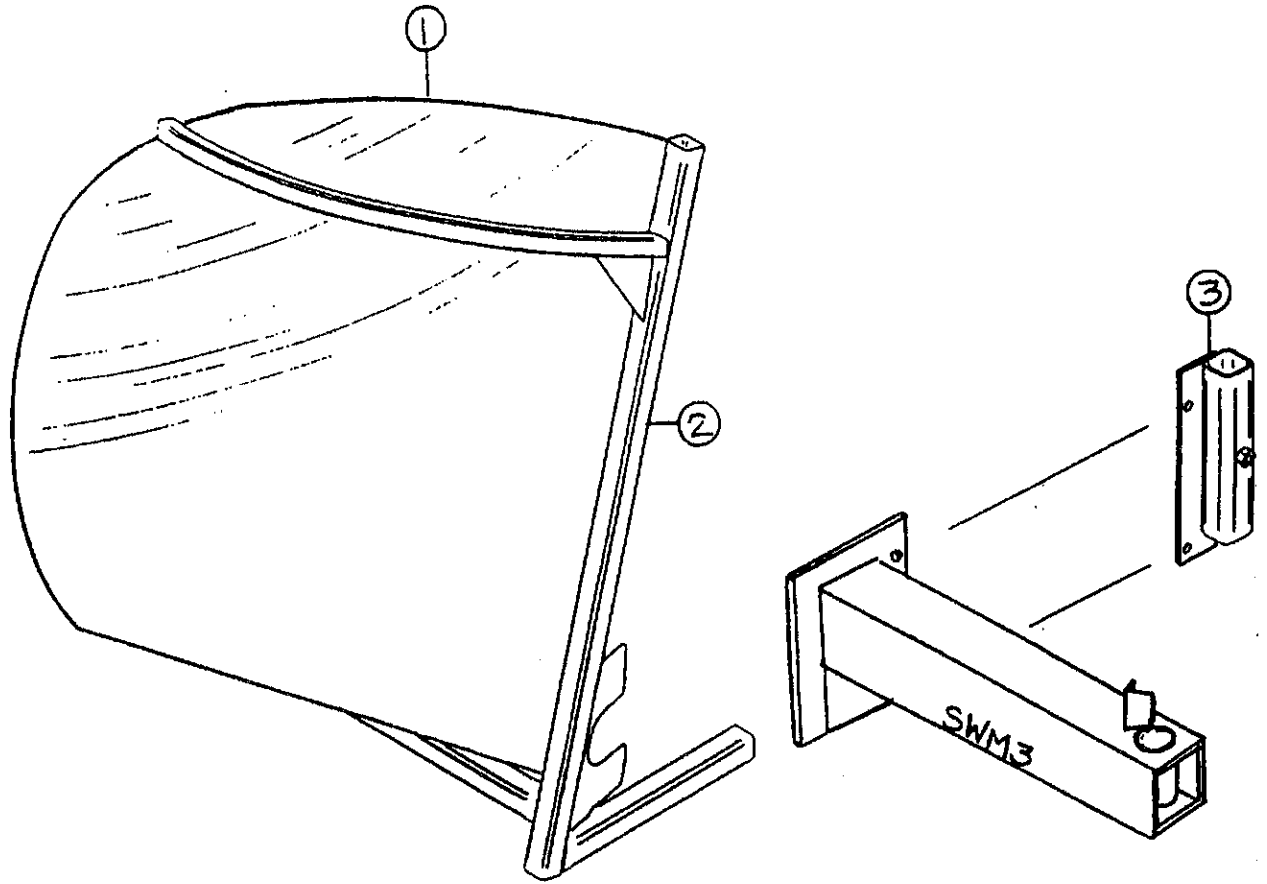
**FIGURE 11**  
**9' & 12' MERGER**  
**POLE - HYDRAULIC CYLINDER 16"**

ITEM	PART NO.	DESCRIPTION
1.	23N142A	Clevis
2.	23N143A	Rod Cap
3.	23N144	Piston
4.	23N145A	Rod
5.	23N146	Cylinder Tube
6.	23N147	Tie Rod
7.	23N148	Piston Nut
8.	23N149	Plug
9.	23N150A	Rod Clevis
10.	23N151	Seal Kit
11.	12V116A	Complete Cylinder



**FIGURE 12**  
**9' & 12' MERGER**  
**OPTIONAL EXTENSION HYDRAULIC CYLINDER**

ITEM	PART NO.	DESCRIPTION
1.	23N142A	Clevis
2.	23N143A	Rod Cap
3.	23N144	Piston
4.	23N145A	Rod
5.	23N146	Cylinder Tube
6.	23N147	Tie Rod
7.	23N148	Piston Nut
8.	23N149	Plug
9.	23N150A	Rod Clevis
10.	23N151	Seal Kit
11.	23N111A	Hydraulic Cylinder

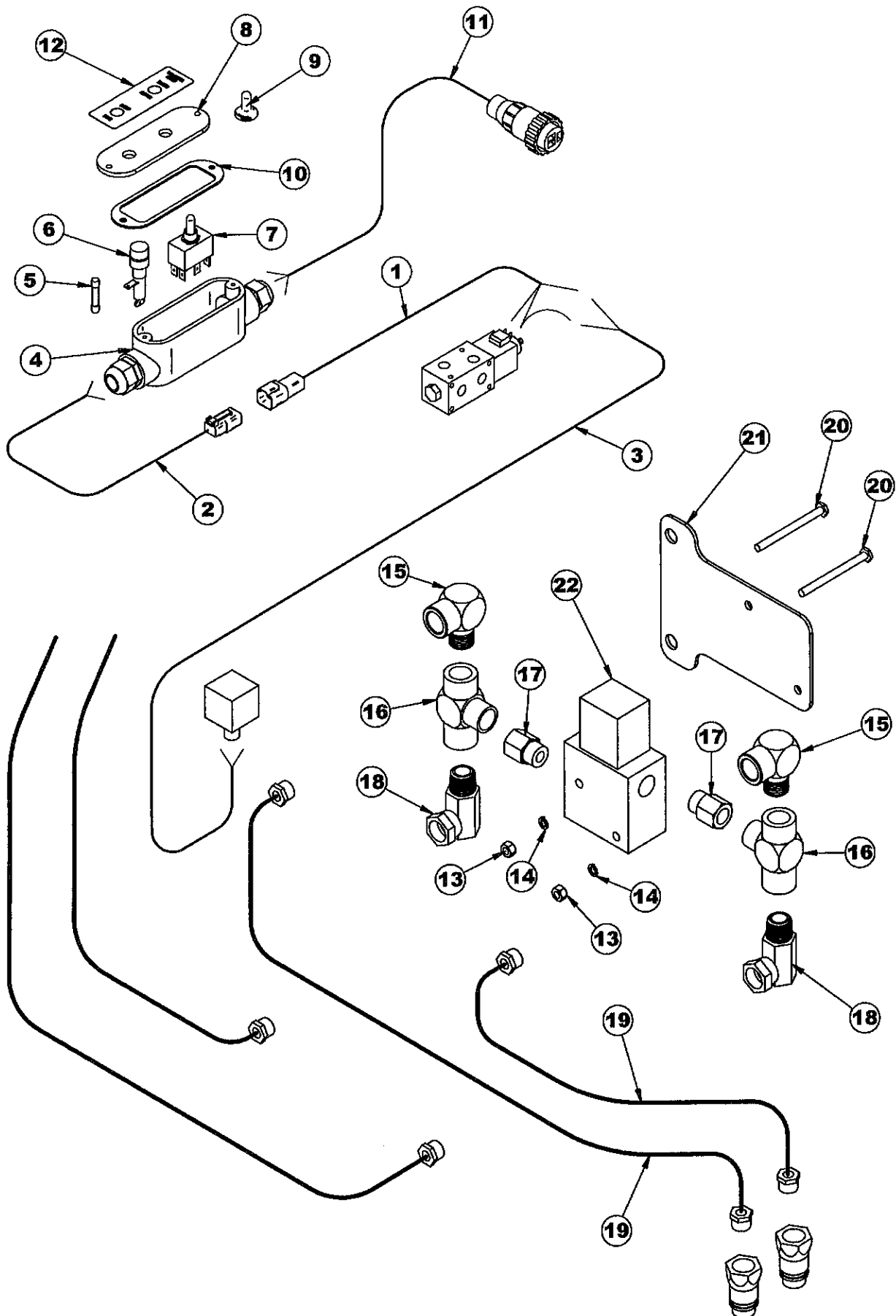


**FIGURE 13**  
**9' & 12' MERGER**  
**OPTIONAL WINDROW INVERTER**

ITEM	PART NO.	DESCRIPTION
1.	SWM50	Windrow Inverter Poly
2.	SWM51	Windrow Inverter Frame
3.	SWM52	Storage Mount

**(NOTE: Storage Mount Bolts onto SWM3 Caster Mount - See Figure 1)**

FIGURE 14



**FIGURE 14**  
**9'/12' MERGER**  
**OPTIONAL CROSS CONVEYOR STOP KIT**

<b>ITEM</b>	<b>PART NO.</b>	<b>DESCRIPTION</b>
1.	WM283	Pole Cord (18')
2.	WM284	Tractor Supply Cord (5'6")
3.	WM327	Solenoid Cord (23'4")
4.	16SV316	Control Box
5.	16SV232	Fuse
6.	16SV231	Fuse Holder
7.	16SV319	Switch
8.	16SV318	Control Box Cover
9.	16SV235	Switch Boot
10.	16SV317	Control Box Gasket
11.	16SV271	Control Box Power Supply W/Plug In Slots
12.	42298	Decal
13.	LW140	1/4" - 20 Nut
14.	K84	1/4" Lock Washer
15.	HE58	1/2" Street Elbow
16.	WM139	1/2" Tee
17.	WM289	7/8" O-Ring To 1/2" NPT Bushing
18.	WM175	1/2" Swivel 90° Union Adapter
19.	T240	1/2" x 24" - 1/2"MPX & 1/2" MP Hose
20.	16SV349	1/4" x 2-1/2" GR. 5 Bolt
21.	WM324	Valve Bracket
22.	WM293	Valve

